

# The Gallery System

## DIRECTIONS

### TRACK

#### Fixing to Plasterboard

We recommend using plasterboard fittings (see illustration 1).

This saves you the trouble of locating the wall studs and means you can pre-drill the track, which saves time.

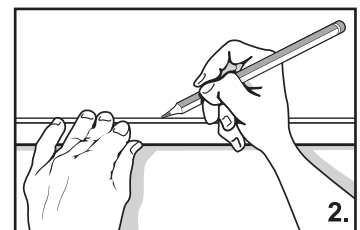
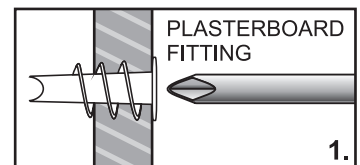
Drill a 4mm hole in the centre of the length of track. Then drill the other holes at 50cm intervals.

Decide on the height at which you want the track. Mark with a pencil at intervals measuring down from the ceiling to ensure the track is level. Using the track as a ruler mark with a pencil (see illustration 2).

Mark the position of the centre hole on the wall, then tap a small nail into the plasterboard.

If it happens to hit a wall stud, fix the track in place with a 25mm x 8 gauge panhead screw, (see illustration 3) if not, fit a plasterboard fitting.

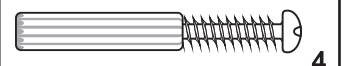
Mark the positions of the remaining holes. Remove the track and tap a nail into each marked position to check for studs, then screw in the plasterboard fittings where needed. Screw the track to the wall.



25mm x 8 gauge panhead self tapping screws.



Fitscrew 1 or 2 turns & tap plug lightly into hole



#### Fixing to Masonry

It's often hard to drill holes in masonry accurately as the drill tends to wander off target so we suggest the following:

Predrill your track starting with a 5mm hole in the centre of the length of track. Then drill the other holes at 50cm spacing.

Decide on the height at which you want the track and mark with a pencil (see fixing to plasterboard) using the track as a ruler. Mark the position of the centre hole on the wall. Hold the track firmly in position on the wall and using the centre track hole as a guide, drill a 5mm hole through into the masonry. Drill 1cm deeper than the length of your wall plugs. Remove the track and fit the 5mm wall plug into the holes (see illustration 4). If it won't go full depth the screw allows you to remove the wall plug, redrill and try again.

Screw the track temporarily in place then, using the holes in the track as a guide, drill the remaining holes in the masonry. Unscrew the track and insert remaining wall plugs and screw the track to the wall (see illustration 1).

Fitscrew 1 or 2 turns & tap plug lightly into hole

